

In addition to the organizations he started, Al was very involved in many groups and organizations, including Knights of Columbus, Northern Plains Resource Council, Right to Life, and many discussion groups. He started the Family Farm Organization in the 1990's.

As anyone who talked with Al will know, he was passionate about farm economics. He wrote many "letters to the editor" and articles about economics and farming. A book he wrote, called "Debt Money: The People's Burden" went to print the week after his stroke. To have this published was a great dream fulfilled.

Al passed away on December 18, 2009, after suffering a major stroke on Thanksgiving Day.



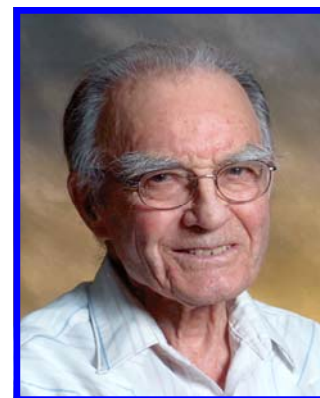
Al is survived by his children: Joe B. Schmitz, Helena, MT; LeRoy (Elaine) Schmitz, Stevensville, MT; Susanne (Ed) Holt, Billings, MT; Mary Kae (John) Middleton, St. Francis, MN; Anita Keller, Glendive, MT; Dorothy "Dodie" (Calvin) Beralas, Newberg, OR; Mike Schmitz, MN; Tony (Susan) Schmitz, Evanston, WY; Peter (Susan) Schmitz, Forest Grove, OR; John

Schmitz, Sidney, MT, Elizabeth "Liz" (Dave) Schmitz-Binnall, Coeur d'Alene, ID; grandchildren: Dirk (Jami) Schmitz, Seattle, WA; Chara, Rebekah, Joanna, Rosemarie Schmitz, Stevensville, MT; Drew Kallen, Tucson, AZ; Rick (Annie) Kallen, Portland, OR; Crystal Bonge, Charlotte, NC; Shamra Schmitz, Lolo, MT; David (Monica) Schmitz, Laramie, WY; Joey Tageant, Scottsbluff, NE; Anna Middleton, St. Francis, MN; Jacob (Algina) Middleton, Winnipeg, Canada; Rhema Keller, Glendive, MT; Elisha Keller, Charlie Creek, MT; Patient Joy Keller, Homer, AK; Isaiah (Alicia) Keller, Twentynine Palms, CA; Jubilee and Lestai Keller, Glendive, MT; Alenka and Tomas Beralas, Newberg, OR; Christine Schmitz, Evanston, WY; Hannah Davita Schmitz, Forest Grove, OR; Larisa Schmitz, Aurora, CO; great grandchild, Isaac Keller, Twentynine Palms, CA; two brothers, Fred A. Schmitz, Sidney, MT and Fr. Bartley F. Schmitz, SVD, Taiwan; and one sister, Avis M. Zoanni, Fairview, MT; numerous cousins, nieces, nephews, other relatives and friends.

Al was preceded in death by his parents: Anton "Tony" and Katharine "Katie" Schmitz; wife, Christine (Fink) Schmitz; children, Robert A. Schmitz, Fred J. Schmitz, Ruth Ann Schmitz; son-in-law, Carl Keller; brothers, John Schmitz and Joe Schmitz; sisters, Carlena Schmitz, Mary (Schmitz) Zoanni, and Margaret Ruth "Ruthy" Schmitz.



In Loving Memory Of



*Alphonse "Al"
Schmitz
August 9, 1916
December 18, 2009*

Alphonse “Al” Schmitz

Born

August 9, 1916

Charlie Creek, Montana

Died

December 18, 2009

Sidney, Montana

Mass of the Christian Burial

10:00 A.M.

Tuesday, December 22, 2009

St. Matthew’s Catholic Church

Sidney, Montana

Presiders

Father Greg Staudinger

Father Ned Shinnick

Music

Chris Bengochea

Casketbearers

Rhema Keller

Elisha Keller

Isaiah Keller

David Schmitz

Ron Fink

Gene Fink

Honorary Casketbearers

*Al’s children, grandchildren,
relatives and friends*

Ushers

Larry Vaira

Jim Zoanni

Jean Bengochea

Dick Zoanni

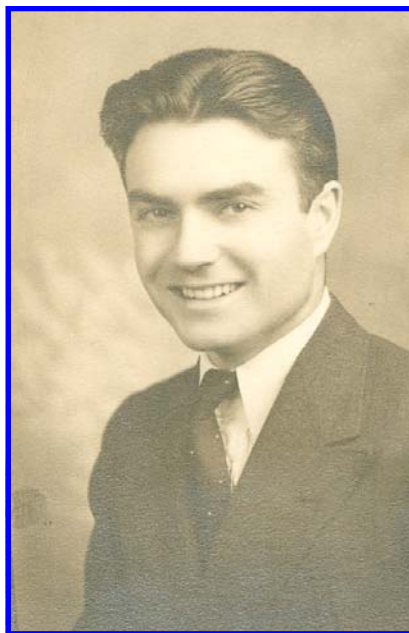
Interment

St. Bernard’s Catholic Cemetery

Charlie Creek, Montana

*Lunch will be served at the Parish
Center following services*

*Remembrances and condolences may
be shared with the family at
www.fulkersons.com*



Alphonse “Al” was born August 9, 1916 in the Schmitz homestead log cabin at Charlie Creek, MT to Anton and Katharine (Noehl) Schmitz. He had eight siblings, two of whom died when they were children. Al lived through the Great Depression raising turkeys, chickens and milking cows to make a living. He attended Sidney High School and graduated in 1934. He went to college in Missoula, where he was active in starting the Student Cooperative Association and was president of the Newman Club. He was also in the ROTC. While at college he met and started a lifelong friendship with Mike Mansfield. Al graduated in 1941 with a Bachelors degree in Economics and Sociology. After college Al returned to the family farm in Charlie Creek. He was instrumental in bringing electricity to the north Richland County area in 1950, and getting the county roads in the area elevated in the 1940s.

Al met Christine Fink, “a cute blonde sitting by herself” at a social event at Girard Hall. They were married at Lambert, MT on June 26, 1948. They had fourteen children and

lived in a house on the homestead property next to Al’s parents until 1964 when they moved to a newly built house near the Missouri river. Christine was diagnosed with cancer in 1967. Al and Christine went to Lourdes, France in November for physical and spiritual healing. Christine died on December 18, 1967, a date which Al never forgot.



Al continued to farm throughout the years, but due to back injuries and other health issues, looked to other avenues for earning enough money to support his large family. He worked at oil leasing from 1950 until the time of his death. He was instrumental in forming Mon-Dak Oil which operated from 1951 to 1954. He continued to operate as a private lease broker for years, until forming Charlie Creek Oil Company with his brothers and sisters in 1976. In addition to oil leasing, Al sold insurance for more than 60 years. He and his family also continued to farm, raising hay, grain, beef cattle and running a small dairy.